

MEN'S FRATERNITY

Men's Fraternity provides men with a process that teaches them to live lives of authentic manhood as modeled by Jesus. Wednesdays 6:15am or Thursdays 7:00pm. mensfraternity@gracearlington.com



A Women's Bible study of Ephesians taught by Pamela Beacham beginning on Tuesday, February 5th. There will be two sessions offered:

- Morning Session – 10:00am (Must RSVP for Childcare)
- Evening Session – 7:00pm (No Childcare)

margaret@gracearlington.com



Tea Parties with Purpose – An hour of conversation, prayer and devotion time that meets weekly for six weeks. Children welcome! To find a Tea Party close to you, contact Laurie Nelson at 817.201.8549.

First Time Moms – Enjoy a time of coaching, questions and discussion for eight weeks with a "seasoned" mom of six. Be encouraged and equipped to be the best mom you can be – by His grace. kennethvaughan@msn.com

International Women of Grace Group

2nd & 4th Sunday 5:00pm
South Arlington
817.987.8385
leslysullivan@yahoo.com



Young at Heart is for women who are 50+ years young. We come together weekly to bless, encourage and spur each other on in our life as sisters in Christ.

mkarakourtis@sbeglobal.net



Encounter is a large group meeting for our High School students (9th-12th grade) that meets Wednesday evenings from 7:00-8:45pm in the youth room. caleb@gracearlington.com



D-Groups offer our committed High School students (9th-12th grade) the opportunity for focused discipleship and community. D-Groups meet Sunday evenings from 6:00-8:00pm. caleb@gracearlington.com



Connection offers our Junior High students (7th-8th grade) the opportunity for focused discipleship and community. Connection meets Wednesday evenings from 6:45-8:30pm. caleb@gracearlington.com



Financial Peace University is a 9-week life-changing course on personal finance, designed to empower people to manage their money according to biblical principles and to experience the freedom that comes by doing so. fpu@gracearlington.com



GriefShare is a friendly, caring group for those that have lost a loved one. Monday 6:30pm. griefshare@gracearlington.com



DivorceCare is a friendly, caring group of people who will walk alongside you through one of life's most difficult experiences. Thursday 7:00pm. divorcecare@gracearlington.com



DC4K provides a safe, fun place where your children will learn to understand their feelings about the divorce, express their emotions appropriately, and be introduced to biblical concepts that will bring comfort. dc4k@gracearlington.com



Overcome hurts, habits and hang-ups through fellowship in Christ and by following the 8 Recovery Principles and 12 Steps of Celebrate Recovery®. Tuesday 7:00pm. Contact Keith at 919.345.7668 or Evelyne at 817.996.2927. overcomewithgrace@gmail.com



Love and Respect is based on the premise that love best motivates a woman and respect most powerfully motivates a man. This interactive study is designed to help couples stay off the "Crazy Cycle" and enjoy the "Energy Cycle" more. Thursdays at 7:00 pm starting Feb 21. loveandrespect@gracearlington.com



The **One Another** ministry of Grace is a community of singles who are intentional about growing in Christ, growing in relationship with each other and serving in our community. singles@gracearlington.com. www.gracearlington.com/oneanother



The **UTA Cornerstone** is our college ministry of Grace Community Church. There are two weekly gatherings, Life[LINE] and The Meeting, as well as other special events. cornerstone@gracearlington.com www.utacornerstone.com



New Members Class and Small Group is a two-part membership class taught by Gary for people who are new to Grace or have been here for a while! The class will be followed by a small group led by Gary and Tracie on Sunday evenings. info@gracearlington.com



WHERE IS YOUR HOME AT GRACE?

HELPING PEOPLE FIND, KNOW AND FOLLOW THE LORD JESUS CHRIST AND MULTIPLY



Singles Group Ages 30-40
 Grand Prairie
 Every Wednesday 7:00pm
 214.353.8970 x223
 eddie@kvrk.com



Van Roekel Group
 Southwest Arlington
 Wednesday 6:45pm
 817.451.4540
 bjnmary.vanroekel@sbcglobal.net



Dekker Group
 Mansfield
 Wednesday 7:00pm
 817.563.0660
 tolibaga@gmail.com



Cedar Hill Group
 Cedar Hill
 Tuesdays
 214.557.2871
 christy_keating@sil.org



Pressley Group
 Northeast Arlington
 Sunday (Bi-Weekly) 6:00pm
 817.633.3113
 zmpress@tx.rr.com



Weideman Group
 Northwest Arlington
 Sunday bi-weekly 6:30 pm
 214.384.7527
 wcweideman@sbcglobal.net



Andrews / Williams
 South Arlington
 Sunday bi-weekly 5:00pm
 972.415.7690
 middletree@gmail.com



Holmes Group
 South Grand Prairie
 Tuesday (1st & 3rd) 7:00pm
 972.262.9688
 byron.holmes@booz.com



Pace Group
 Southwest Arlington
 Every other Thursday 7:00pm
 817.572.5973
 lodeh@sbcglobal.net



Marti Group
 Duncanville
 Saturday 5:30pm
 417-214-4447
 n.marti@aol.com



Gish Men's Group
 South Arlington
 Saturday 9:00am
 817.247.8106
 gishdi@yahoo.com

HOME GROUPS

YELLOW GROUPS HAVE CHILDREN

Full Home Groups



Nelson Group
 Mansfield
 Sunday 5:00pm
 817.201.8283
 ericnelsonstexas@gmail.com



Sullivan International Group
 South Arlington
 1st & 3rd Sunday 5pm
 817.987.8385
 leslysullivan@yahoo.com



wgWeikel Group
 Northwest Arlington
 Thursday 6:00pm
 817.277.6733



Lay Group
 East Arlington
 Saturday (2nd & 4th) 6:30pm
 817.375.3876
 rlay15@aol.com



Rehnquist Group
 Southwest Arlington
 Sunday 6:15pm
 817.492.8032
 rehnquist6@sbcglobal.net



Comolli Group



Wadley Group



Connett Group



Marsden Group



Scheffrahn Group



Garrett Group



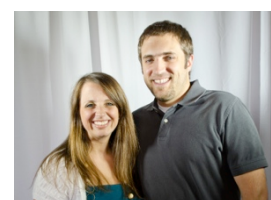
Nelson Group



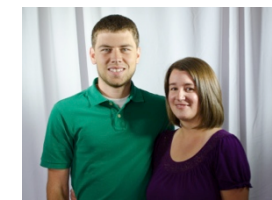
Welch Group



Sute Group



Audi Group



Brown / Ochocki



Harrell Group



Frazier Group
 Grace Community Church
 Thursday 7:00pm
 682.552.2431
 chrisfrazier33@gmail.com